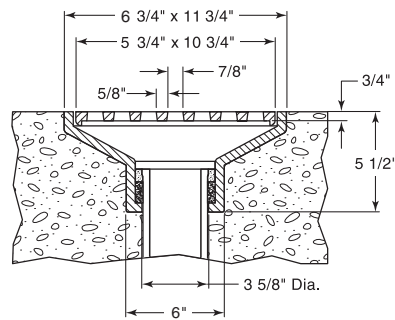


■ Note: When specifying/ordering grates, refer to "Choosing the Proper Inlet Grate" on pages 125-126.
For a complete listing of FREE OPEN AREAS and WEIR PERIMETERS of all NEENAH grates, refer to pages 327-332.

R-4937-A Floor Drain, Grate

Light Duty

CATALOG NUMBER	GRATE TYPE	SQ. FT. OPEN	WEIR PERIMETER LINEAL FEET
R-4937-A	B	0.2	2.7

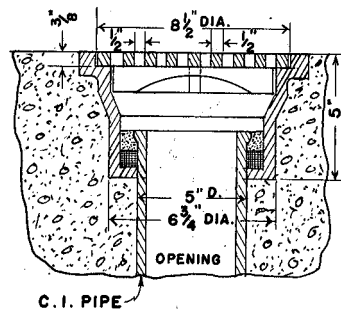


Outlet for 3" inside pipe caulk.

R-4937-B Floor Drain, Grate

Light Duty

CATALOG NUMBER	GRATE TYPE	SQ. FT. OPEN	WEIR PERIMETER LINEAL FEET
R-4937-B	G	0.1	2.2

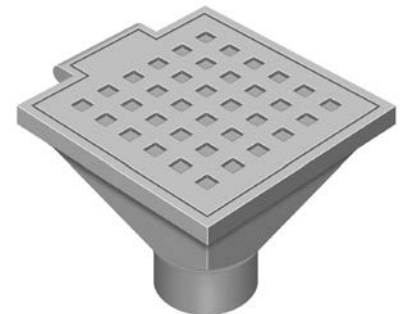
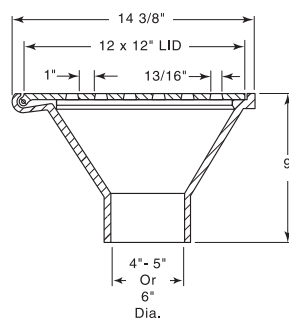


Outlet for 4" inside pipe caulk (Supplied by others).

R-4937-C Series Floor Drain Frame, Hinged Strainer

Light Duty

CATALOG NUMBER	GRATE TYPE	SQ. FT. OPEN	WEIR PERIMETER LINEAL FEET
R-4937-C1	H	0.2	4.0
R-4937-C2	H	0.2	4.0
R-4937-C3	H	0.2	4.0



Catalog No.	Size
R-4937-C1	to fit 4" soil pipe
R-4937-C2	to fit 5" soil pipe
R-4937-C3	to fit 6" soil pipe

Supplied By:

**TRENCHDRAIN
SUPPLY**

877-903-7246

www.trenchdrainsupply.com